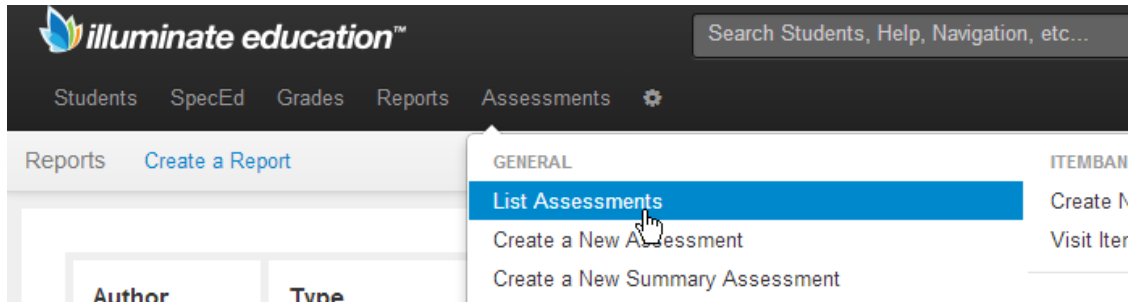


Using the AIMSweb Three Year Trend report

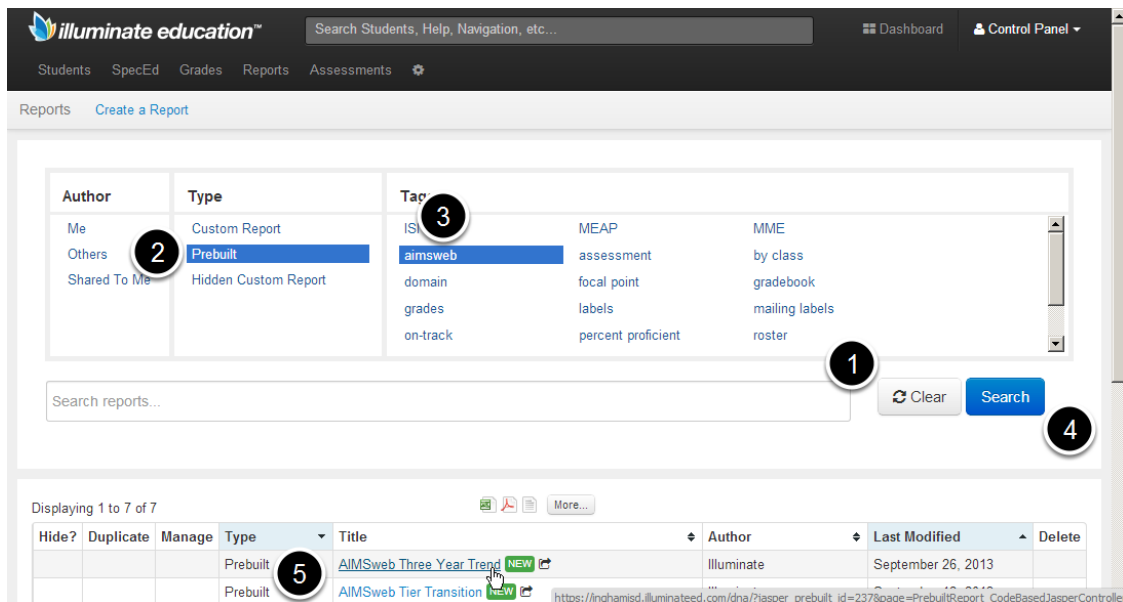
Use the Illuminate Education pre-built report "AIMSweb Quadrant Instructional Sort" report to compare student results in two different AIMSweb measures.

Go to the Assessment List



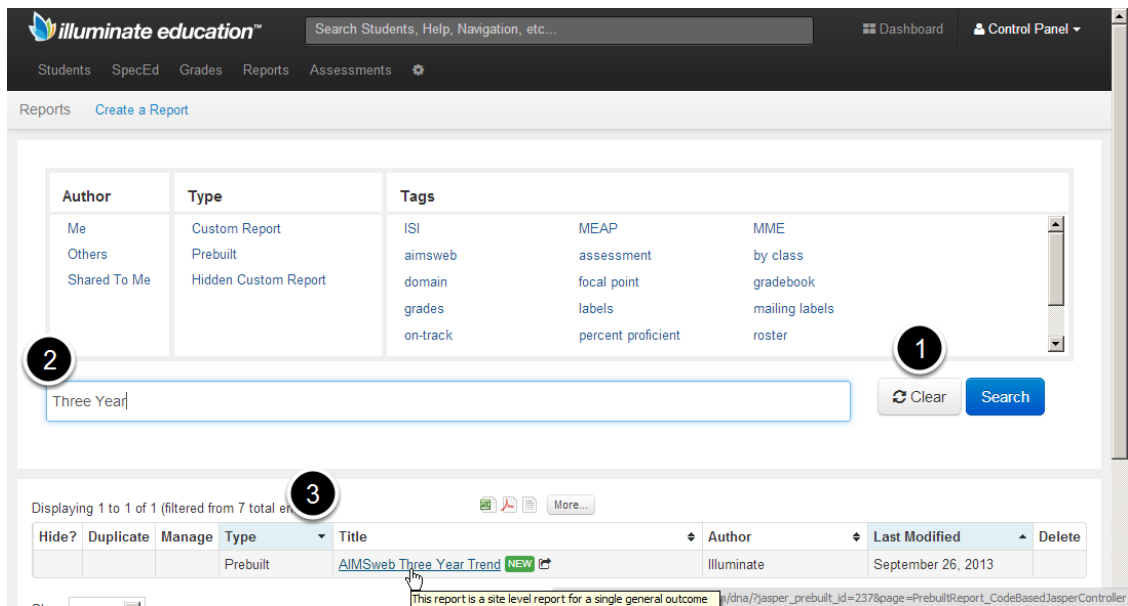
Log onto Illuminate. From the top navigation bar, select Assessments > List Assessments.

Locate the AIMSweb Three Year Trend report (filter method)



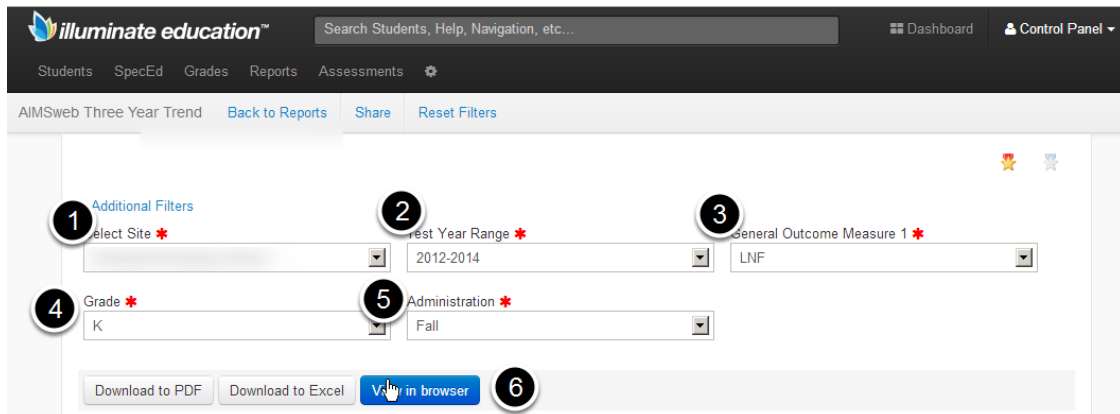
You can narrow the report list in a couple of ways. First, you could use the filters feature of Illuminate. Start by clearing any filters by pressing the "Clear" button (Step 1). Next, select "Prebuilt" in the Type column (Step 2) and aimsweb in the Tags column (Step 3). Hit Search (Step 4). A shortened list of prebuilt reports should appear. Click on the report named "AIMSweb Three Year Trend" (Step 5).

Locate the AIMSweb Three Year Trend report (Search box method)



Alternately, you can locate the report by using the Search report... function. Start by clearing any filters that are in place by clicking on the "Clear" button (Step 1). Next, click in the "Search reports..." box and type "Three Year" (Step 2). The report list should show only those reports with the words "Three Year" in their titles. Click on the report named "AIMSweb Three Year Trend" (Step 3).

Use the selection filters to identify the data you wish to report



This prebuilt report provides many different filter options, to return exactly the data you wish to view.

- 1) Select a specific site you wish to view. Selecting a site is required.
- 2) Select a year range (2012-2014 includes the 2011-2012, 2012-2013 and 2013-2014 school years). This step is required.
- 3) Select the assessment you wish to view. This step is required.
- 4) Select the grade you wish to view. NOTE: this report will show the results for the students that were in the selected grade during that test year. This is not a cohort view (the same group of

students viewed over multiple years).

5) Select an administration period (Fall/Winter/Spring). This is a required field.

6) Select an output format (pdf, Excel or view in Browser).

View your report

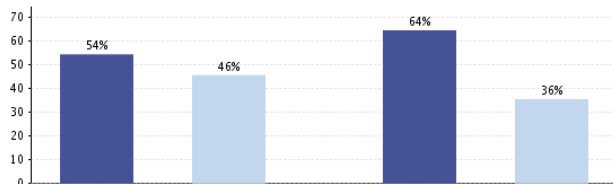
Report finished.

← Previous Page Next Page → [Show All](#)

← Pagination Controls

AIMSweb© Three Year Trend Report
2012-2014 Fall Grade K General Outcome Measure: LNF

	2011-2012		2012-2013	
At Benchmark	49	64%	25	54%
Not at Benchmark	27	36%	21	46%
Total # of Students	76		46	



Illuminate should produce your report, based upon your selections. Depending upon the student population, the report may span multiple pages. If you are viewing the report in a browser, use the pagination controls at the top of the report to view additional pages.